

AVAILABLE IN 1981
 COLOR: CELERY GREEN
 5 OZ. COFFEE MUG



1981 ELEPHANT MUG
 5.00

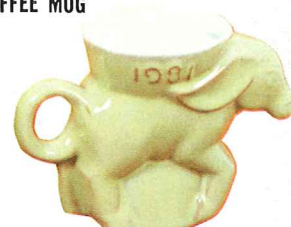
The original "Elephant Mug" was created for the National Republican Womens Club and copyrighted by Frankoma in 1969 and patented in 1970. The "Donkey Mug" was created in 1975 copyrighted and patented.

Now each year these mugs are produced by Frankoma as a stock item. The current mugs are only available during that year — Each year the color is different.

© F.P. 1975, U.S. Pat. No. D605,739
 © F.P. 1969, U.S. Pat. No. D214,868

Past Issues No Longer Available From Factory

AVAILABLE IN 1981
 COLOR: CELERY GREEN
 5 OZ. COFFEE MUG



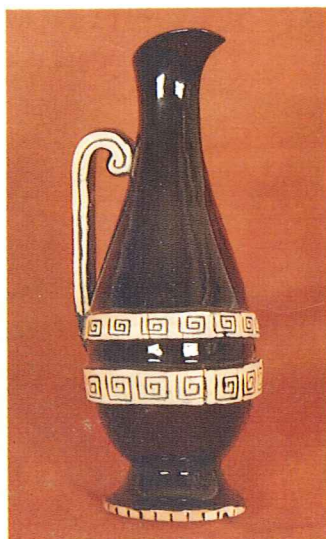
1981 DONKEY MUG
 5.00

PAST ISSUES ELEPHANT MUG COLORS

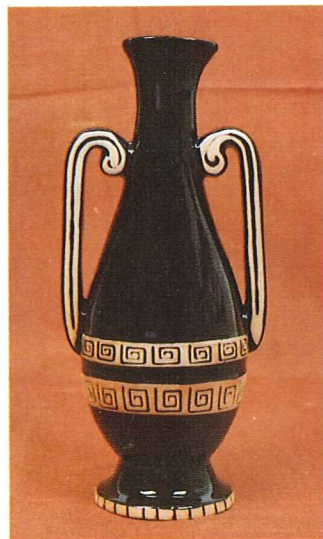
1968 — White; 1969 — Flame; 1970 — Blue; 1971 — Black; 1972 — Prairie Green; 1973 — Desert Gold; 1974 — Coffee; 1975 — Autumn Yellow; 1976 — Centennial Red; 1977 — Pink; 1978 — Moss; 1979 — Brown Satin; 1980 — Terra Cotta.

PAST ISSUES DONKEY MUG COLORS

1975 — Autumn Yellow; 1976 — Centennial Red; 1977 — Pink; 1978 — Moss; 1979 — Brown Satin; 1980 — Terra Cotta.



No. V12 (15.00)



No. V13 (15.00)

Pictured are the two 13" limited edition vases #V12 & #V13 in the series. #V13 is designed as a companion vase to last year's single handled vase. There are a limited number of #V12 vases still available, and they will be produced until we reach #3,000. This vase as the #V12 is in Black with highlights of Terra Cotta in the Grecian design. The mold is signed by the artist—Joniece Frank. Each piece is numbered, and the master mold is destroyed after a total of only 3,000 are made. No seconds are sold.

You are a welcomed guest at the factory any time. Should you come during working hours, we will be glad to conduct you through the plant to see Frankoma made. (Tours Monday thru Friday, 8:30 a.m. — 2:30 p.m.)

FRANKOMA POTTERY, INC.

1-918-224-5511

P. O. Box 789 • 2400 Frankoma Road
 Sapulpa, Oklahoma 74066

FRANKOMA POTTERY MAY BE PURCHASED FROM:

HOW TO MAINTAIN THE BEAUTY OF FRANKOMA:

Frankoma's hand-mixed glazes are designed not only for beauty, but also for durability. The following simple steps will insure that beauty and durability.

1. Frankoma's glazes are durable, but the alloys in some flat ware may occasionally mark the finish. If these marks should appear on your pottery, a mild powdered cleanser should be used to remove them. Normal mild household cleansers will not harm the finish.
2. Cups and mugs should be rinsed after serving coffee or tea to avoid stains. Should a stain buildup occur you could restore the beauty of your cups by soaking them in a solution of 1/2 liquid bleach and 1/2 water.

HOW AND WHERE YOU CAN PREPARE FOOD:

Frankoma is safe in conventional ovens, microwaves and dishwashers. However, it should never be used from cold temperatures into any heating unit. Frankoma should never be used directly on heat from either electric or gas ranges. Room temperature is best for placing of dinnerware in the oven. Hot serving pieces should never be placed on a cold or wet surface. For reasons unknown to us, some Frankoma pieces will retain heat in a microwave and other similar pieces remain normal.

PROTECTING DELICATE SURFACES:

1. Due to Frankoma's unique red-firing clay it is necessary for each and every piece to have an unglazed surface on the bottom. Due to the nature of the product there may occasionally be an abrasive surface on the unglazed area. For this reason it is recommended to always use placemats or a tablecloth with any pottery, stone ware or china.
2. Pottery floral containers and planters require the same care as glass. Always place your container on a plate of some type. Condensation may occur on pottery as it does on glass, and a plate will protect your good wood finishes.

WARRANTY:

Frankoma Pottery carries a full three-year warranty against defects in materials or workmanship. Our warranty does not cover chipping. Frankoma Pottery is manufactured with as much durability as possible; however, chipping can occur if contact is made with another object. If you find you have a defective piece, contact your local representative or Frankoma Pottery, Customer Service Department, P. O. Box 789, Sapulpa, OK 74066.